

Anand vihar

At Kishangarh



Celebrate the spirit of living.....



Celebrate the spirit of living.....

Concept

Anand Vihar Township is planned and Developed for the purpose of providing a Comprehensive array of Facilities At one single place in the middle of lush greens.

It will be Located at one of the most Beautiful locale near the Kishangarh which is famous for tremendous variety Of marbles. Having Combination of various plot sizes from 200 sq. Yds. To 500 sq. Yds.

It will have all the Facilities of Community living like:-

Children play area, Central Park.

Celebrate the spirit of living.....

Features

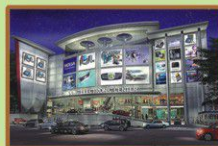
- Electricity lines (supply from state electricity company)
- Street lights
- Water connectivity
- Beautiful landscaping all over the land
- Entry through a magnificent gate
- Easy approach Roads
- 24 hours security at the entrance



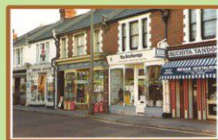
Celebrate the spirit of living.....



MAIN ENTRANCE



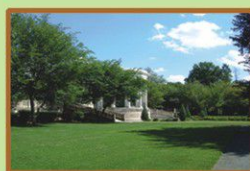
COMMERCIAL



FOOTKAR SHOPS



SERVICE ROAD



GARDEN



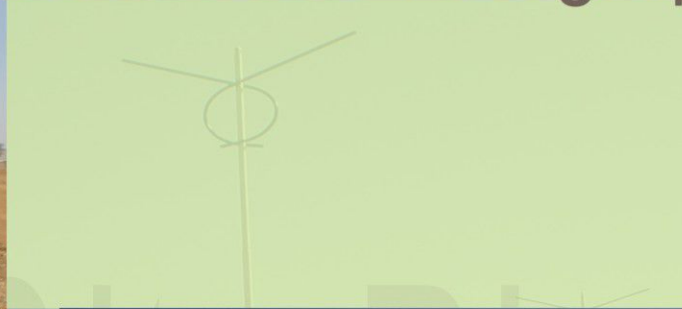
LEGEND

- COMMERCIAL
- GROUP HOUSING
- FOOTKAR SHOP
- TYPE 40'X70'
- TYPE 35'X69'
- TYPE 30'X60'
- TYPE 25'X50'
- TYPE 25'X40'



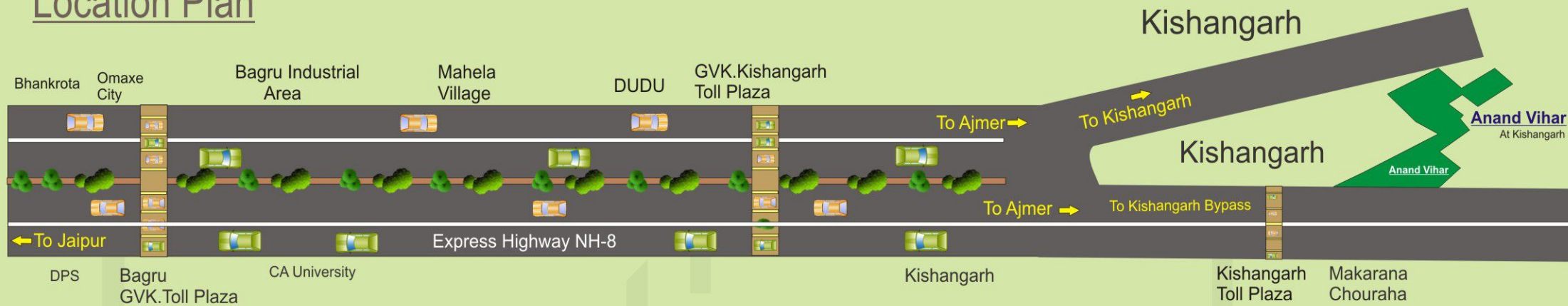
Master plan

Actual Site Photograph



Celebrate the spirit of living.....

Location Plan



It is a merely a half an hour drive from the city of jaipur. It is well connected by means of Express Highway Nh-8 Offering you a hassle free smooth drive. It is a land of tranquility and comfort with the abundance of nature taking you far from the maddening crowd of the city, yet not so far.

Celebrate the spirit of living.....

Anand vihar

At Kishangarh



Promoters & Developers



Grass Field Kishangarh Project (Pvt.) Ltd.

Registered Office:

K-107, Club Lane
Janpath, Shyam Nagar
Jaipur 3020190, 141-2293790, 2293481
E-mail: info@thegrassfields.com
Website: www.thegrassfields.com

Sales & Marketing

Satish Agarwal - 94140-11386
Dinesh Baheti - 94140-11386

Architect-



where the architecture begins...

Jaipur off: LG-1 Shivam Enclave, Triveni Nagar
0141-2762127, 9414003871